

Descriptions

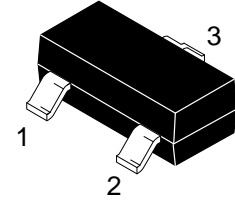
The ESD24R008TA is a TVS (Transient Voltage Suppressor) array designed to protect high speed data interfaces.

It has been specifically designed to protect sensitive electronic components which are connected to data and transmission lines from over-stress caused by ESD (Electrostatic Discharge).

The ESD24R008TA incorporates two pairs of ultra-low capacitance steering diodes plus a TVS diode.

The ESD24R008TA may be used to provide ESD protection up to $\pm 25\text{kV}$ (contact and air discharge) according to IEC61000-4-2, and withstand peak pulse current up to 4 A (8/20 μs) according to IEC61000-4-5.

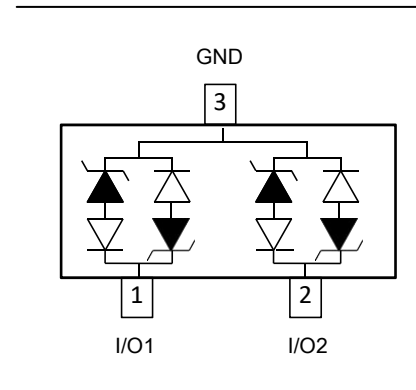
The ESD24R008TA is available in SOT-23 package. Standard products are Pb-free and Halogen-free.



SOT-23 (Top View)

Features

- Stand-off voltage: 24V Max
- Transient protection for each line according to IEC61000-4-2 (ESD): $\pm 25\text{kV}$ (contact and air discharge)
IEC61000-4-4 (EFT): 40A (5/50ns)
IEC61000-4-5 (surge): 4A (8/20 μs)
- Ultra-low capacitance: $C_J = 0.8\text{ pF typ.}$
- Ultra-low leakage current: $I_R < 1\mu\text{A typ.}$
- Solid-state silicon technology



Applications

- Industrial Control Networks
Smart Distribution Systems
Device Net
- Automotive Networks
Low and High-Speed CAN
Fault Tolerant CAN

Order information

Device	Package	Marking	Shipping
ESD24R008TA	SOT-23	BW24	3000/Tape&Reel

Absolute maximum ratings

Parameter	Symbol	Rating	Unit
Peak pulse current ($t_p = 8/20\mu s$)	I_{PP}	4.0	A
ESD according to IEC61000-4-2 air discharge	V_{ESD}	± 25	kV
ESD according to IEC61000-4-2 contact discharge		± 25	
Operation junction temperature	T_J	-55~150	$^{\circ}C$
Lead temperature	T_L	260	$^{\circ}C$
Storage temperature	T_{STG}	-55~150	$^{\circ}C$

Electrical characteristics (TA=25 oC, unless otherwise noted)

Parameter	Symbol	Condition	Min.	Typ.	Max.	Unit
Reverse stand-off voltage	V_{RWM}				± 24.0	V
Reverse leakage current	I_R	$V_{RWM} = 24V$			1.0	μA
Reveres breakdown voltage	$V_{BR(I/O-GND)}$	$I_T=1mA$	25.0			V
Clamping voltage	V_C (I/O-GND)	$I_{pp}=1.0A$ $t_p=8/20us$			36.0	V
		$I_{pp}=4.0A$ $t_p=8/20us$			55.0	V
Junction capacitance	C_J	$V_R = 0V, f = 1MHz$		0.8		pF

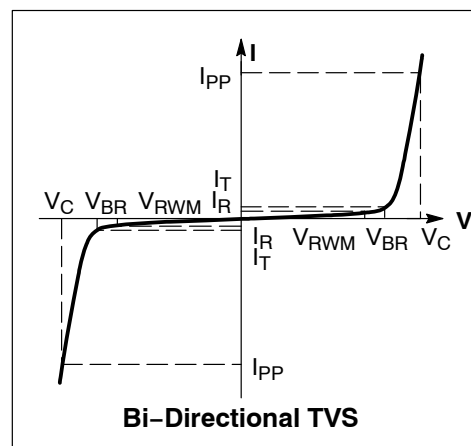
Electrical performance curve

V_C : Maximum clamping voltage

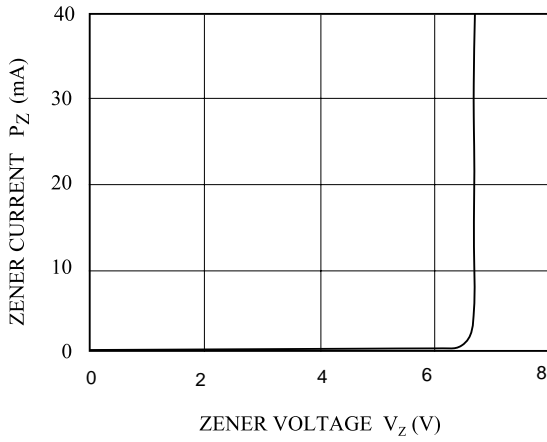
V_{br} : Reverse breakdown voltage

V_{RWM} : Working voltage

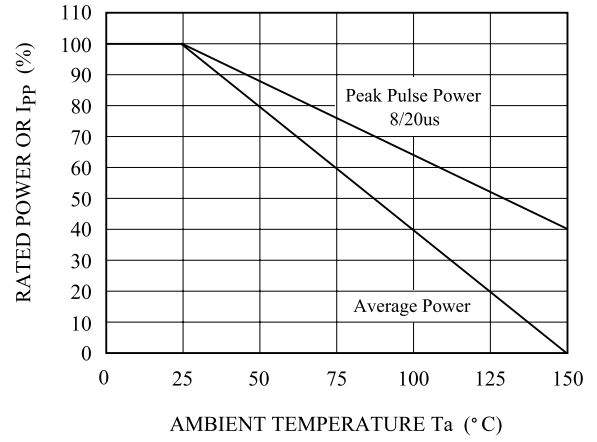
I_{PP} : Maximum peak current



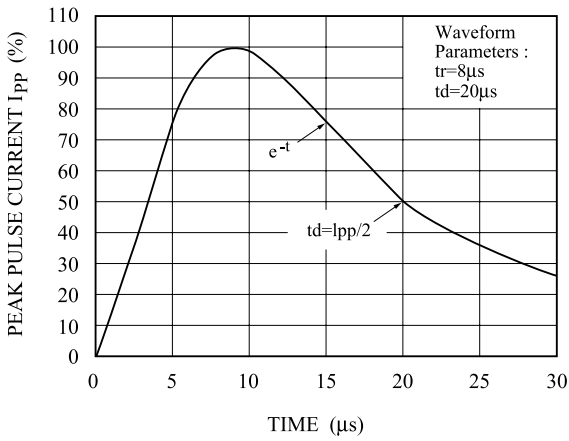
$V_Z - I_Z$



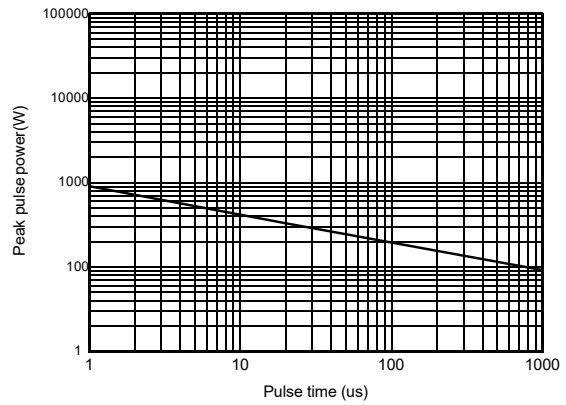
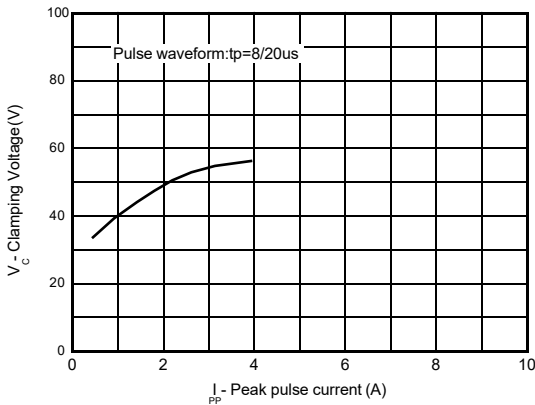
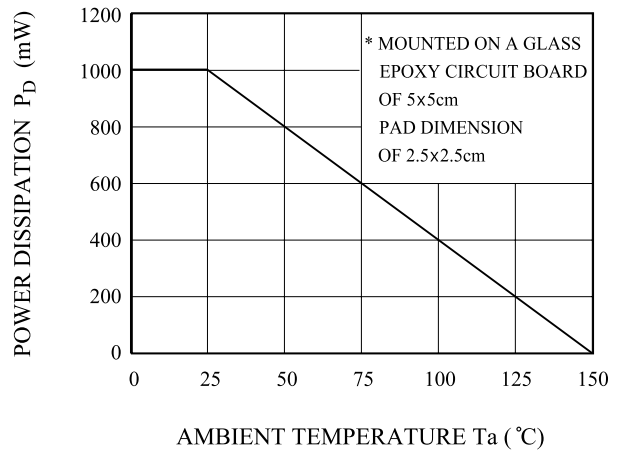
POWER DERATION CURVE



PULSE WAVEFORM

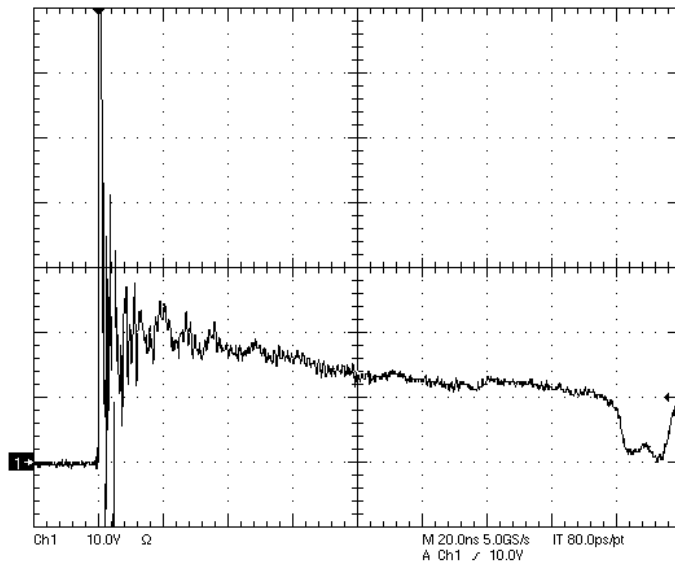


$P_D - T_a$

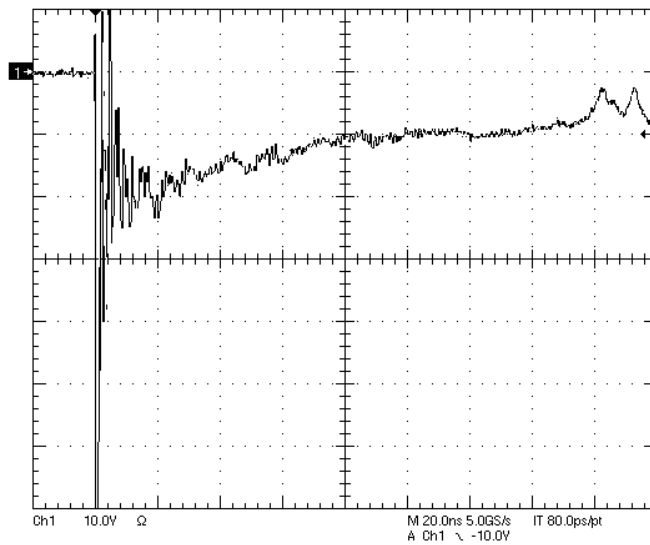


Clamping voltage vs. Peak pulse current

Non repetitive peak pulse power vs. Pulse time



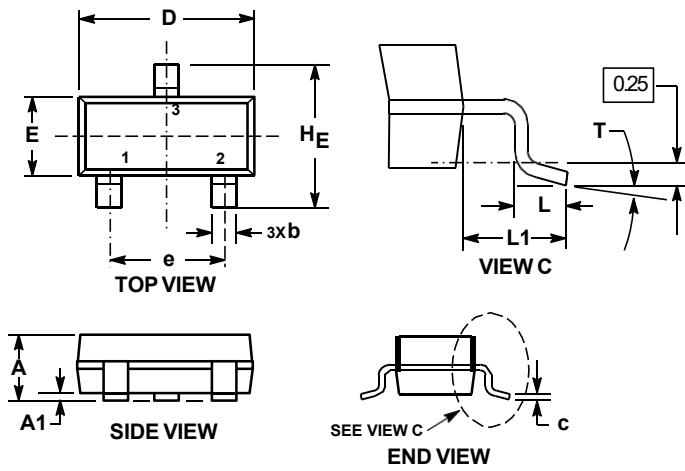
**Figure 1. ESD Clamping Voltage Screenshot
Positive 8 kV Contact per IEC61000-4-2**



**Figure 2. ESD Clamping Voltage Screenshot
Negative 8 kV Contact per IEC61000-4-2**

Package outline dimensions

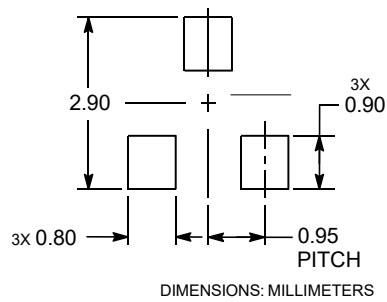
SOT-23



DIMENSION: MILLIMETERS

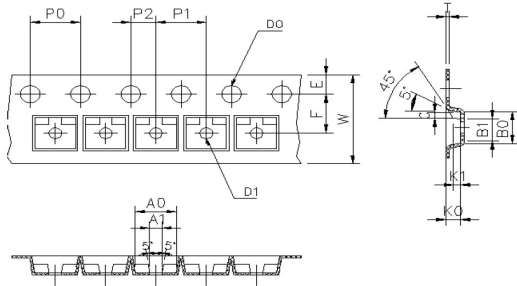
DIM	MILLIMETERS			INCHES		
	MIN	NOM	MAX	MIN	NOM	MAX
A	0.89	1.00	1.11	0.035	0.039	0.044
A1	0.01	0.06	0.10	0.000	0.002	0.004
b	0.37	0.44	0.50	0.015	0.017	0.020
c	0.08	0.14	0.20	0.003	0.006	0.008
D	2.80	2.90	3.04	0.110	0.114	0.120
E	1.20	1.30	1.40	0.047	0.051	0.055
e	1.78	1.90	2.04	0.070	0.075	0.080
L	0.30	0.43	0.55	0.012	0.017	0.022
L1	0.35	0.54	0.69	0.014	0.021	0.027
HE	2.10	2.40	2.64	0.083	0.094	0.104
T	0°	---	10°	0°	---	10°

RECOMMENDED SOLDERING FOOTPRINT



SOT-23 Tape and reel

SOT-23 Embossed Carrier Tape

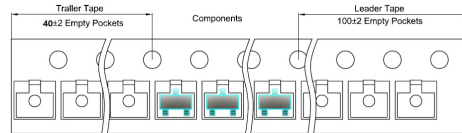


Packaging Description:

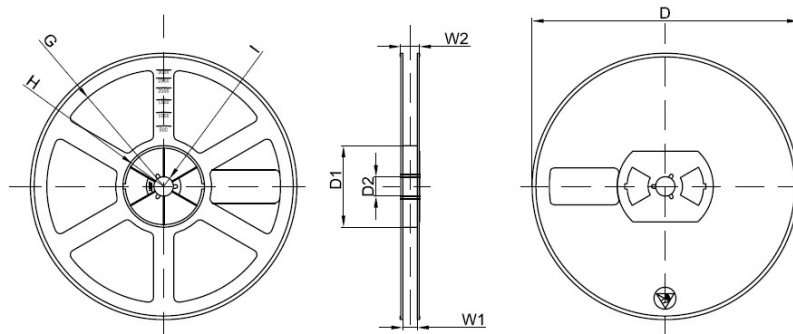
SOT-23 parts are shipped in tape. The carrier tape is made from a dissipative (carbon filled) polycarbonate resin. The cover tape is a multilayer film (heat Activated Adhesive in nature) primarily composed of polyester film, adhesive layer, sealant, and anti-static sprayed agent. The reels are blue in color and made of recyclable plastic.

Symbol	Spec	Symbol	Spec
W	8.00±0.10	A ₀	3.15±0.10
E	1.75±0.10	A ₁	1.09±0.10
F	3.50±0.10	B ₀	2.77±0.10
D ₀	1.50±0.10	B ₁	2.15±0.10
D ₁	1.00±0.10	K ₀	1.22±0.10
P ₀	4.00±0.10	10*P ₀	40.00±0.20
P ₁	4.00±0.10		
P ₂	2.00±0.10		
t	0.19-0.22		
10*P ₀	40.00±0.20		

SOT-23 Tape Leader and Trailer



SOT-23 Reel



Unit: mm

Reel Option	D	D1	D2	G	H	I	W1	W2
7" Dia	Ø178.00	54.40	13.00	R78.00	R25.60	R6.50	9.50	12.30
Tolerance	±2	±1	±1	±1	±1	±1	±1	±1

Packaging Quantity

Reel	Reel Size	Box	Box Size(mm)	Carton	Carton Size(mm)
3,000	7 inch	45,000	210*208*203	180,000	440*440*230